



# West Pennway Street Redesign Plan

Steering Committee Meeting 9.16.21, Special Session

# Meeting Purpose and Agenda

## Purpose:

Presentation of additional design option responding to Steering Committee and community comments, and resetting dates for community event and next meeting.

## Agenda:

- What we've heard
- Design scenario #4
- Polls
- Community Meeting date, Next SC/TA Meeting date

# Project Schedule

## **Phase 1: Discovery**

1.1 - Existing Condition Assessment

1.2 - Stakeholder Meeting

1.3 - Coordination Meeting with City Departments

## **Phase 2: Strategy**

2.1 - Scenario Development + Walking Meeting

2.2 - Stakeholder Meeting + PAUSE + Special Meeting

2.3 - Public Meeting

## **Phase 3: Implementation Planning**

3.1 - Finalize Preferred Scenario

3.2 - Draft Implementation Plan

3.3 - Stakeholder + City Department Meeting

3.4 - Public Meeting

3.5 - Finalize Deliverables



# Our Work Together

- The goal of this process is to **work with residents, business owners, local non-profit organizations, and city departments** to integrate safety improvements for all modes of travel, with new opportunities to link green spaces and provide stormwater management.
- There are opportunities to slow vehicle traffic, prioritize foot traffic, and generally make the street more responsive to community needs. There are a **myriad of best practices** that could be employed on the street, but we need to **hear from you to truly understand how to best serve you and your neighbors.**
- Many of you will have the opportunity to be a **liaison between this project and a larger community.** It is our hope that by working with you, the **needs and desires** of residents, commuters, and visitors to the West Pennway Corridor is represented to direct a **holistic redesign.**
- Your participation in the Steering Committee will help guide the consultant team at milestone decisions throughout the project. This group will be the **primary sounding board** for community concerns, aspirations, and institutional memory of past plans and decisions.
- Your role as a Steering Committee member will be to **react to design ideas our team shares with you as a community representative acting not in your own self interest, but in the interest of your community.**
- Your main contribution to this project is your input, but we do encourage you to **share updates on the project with other community members,** especially if you represent a larger group.



# Feedback from Steering Committee Meeting 1 & Walk

- **Importance of community culture** represented on the corridor (art, gardens, and events)
- **Opportunities to gather as a community** (add simple amenities to park land to show it is for use by community members, tables, benches, bike, racks, grills, games)
- Interested in having **areas for food trucks and programmed activities**
- Make the **one-way streets and speed limits more apparent** (signage, painted right of way, narrower drive lanes, adding street furnishings and plantings, etc)
- Consider **gateway at 21st**
- Consider Jarboe park, pedestrian safety, and school traffic at **17th**
- The **trees are important to save**, and plant more of
- Express the **linear park**
- Opportunity for **safer pedestrian experience** (focus on pedestrians and good sidewalks)
- **Slow down the traffic** and create clear crosswalks and directional signage
- **Connect library, community center, park spaces, and bus stop** in clearer ways
- Interest in creating a local, **community-based conservation organization** to support programming and maintenance
- The neighborhood would like to have more **connections to Primitivo Garcia**, to support the families and outdoor education opportunities.
- Keep **maintenance and implementation** at the forefront of design solutions

# Feedback from Steering Committee Meeting 2 (Scenario Presentation)

- Provide **accountability for maintenance** of implemented strategies (plantings, murals, trees)
- Confirm all scenarios **accommodate existing vehicular traffic** (i.e. business traffic, first responders, busses, parade floats, etc.)
- Provide an option that **does not reduce the width** of West Pennway
- **Parking** appears to be affected/reduced - provide counts for each scenario
- Address **lighting and security**
- Focus on new opportunities to **activate and connect greenspaces at Library and Jarboe Park**
- Focus on **community gathering space in parks** rather than in the street

# Additional Feedback Received

Barbara Bailey (CAN Center):

- Maintain street width
- Maintain existing capacity for parking
- Use existing greenspace for improvements

Amy Morris (Library):

- Maintain existing capacity for parking
- No additional trees along street
- Add safety features at crossings at 20th and 21st
- Add gathering space at 20th St.
- Minimize landscape design maintenance, prefer site furnishings
- Lighting and cameras?
- Connect bus stop
- Bollards/Flex posts are not attractive
- Prefer symmetrical design

Cady Seabaugh (McCormack Baron Salazar):

- Address parking and protected space for street events with pull-in spaces and bumpouts at corners (i.e. Brookside)
- Options to increase visibility may be more effective for safety than cameras
- Connect bus stop to Library

Virginia Bellis (Westside NA and walkers):

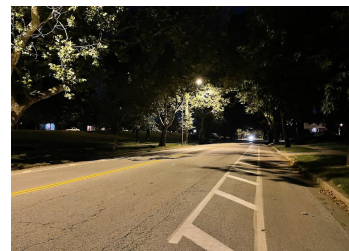
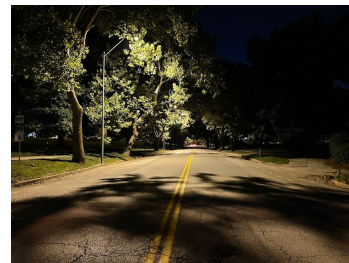
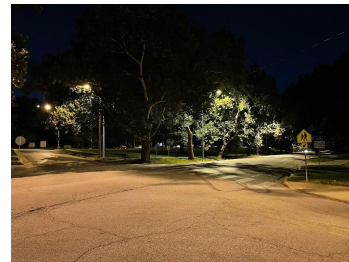
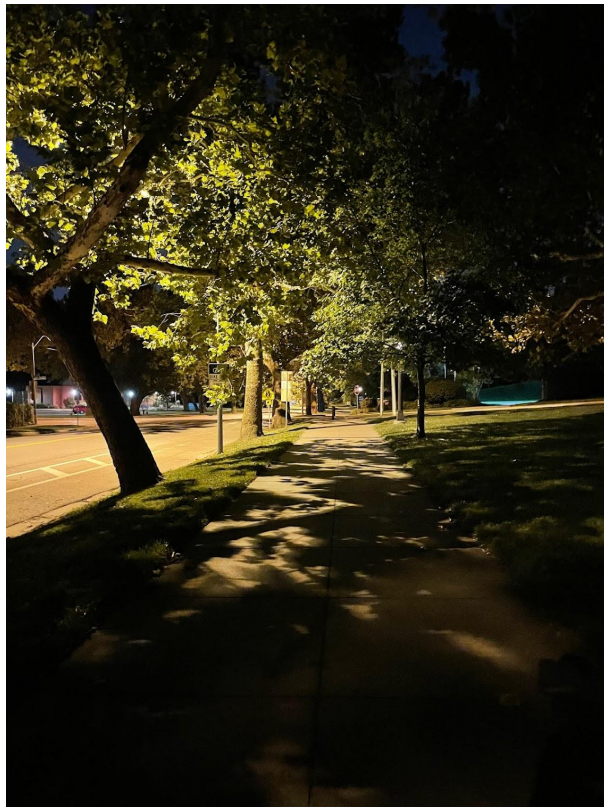
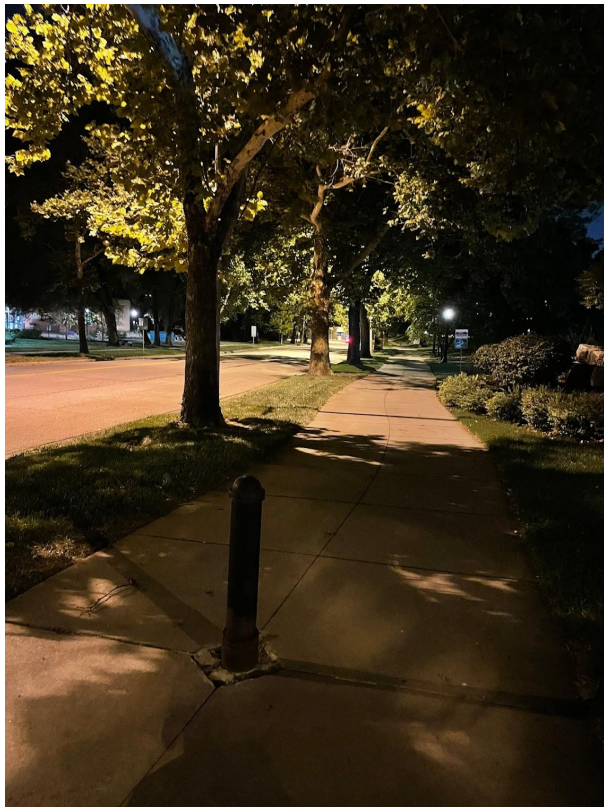
- Prefers “Meander” option for crossings and slowing traffic
- Prioritize beauty and functionality over parking for events
- New trees in greenspaces rather than along street
- Address wrong way driving at 21st and Madison with bump out and new pull-in parking



# Features of all Scenarios based on feedback

1. Intersection redesign for traffic clarification and pedestrian safety
2. 21st Street deterrent for wrong-way traffic (bumpouts and signage)
3. Mid-block bumpouts for crossings and complete connections to sidewalks
4. ADA improvements
5. Repair broken sidewalks on east side
6. Continuous Heritage Trail on west side
7. Signage for crossings (various options)
8. Pedestrian lighting on both sides
9. Connections to the Library from Community Center, bus stop and activated green space
10. Street parking during events
11. Close Bellevue to through-traffic
12. Activate east "wedges" with green infrastructure strategies to reduce stormwater impacts downhill, site furnishings, and partner programming opportunities

# Current Lighting



# Additional Pedestrian Lighting



Photo by Chris DeLong



# Signage

One of the most effective ways to affect drivers' caution. Second only to signalizing intersections.



Rapid flashing beacons could be an addition to mid block crossings for any scenario

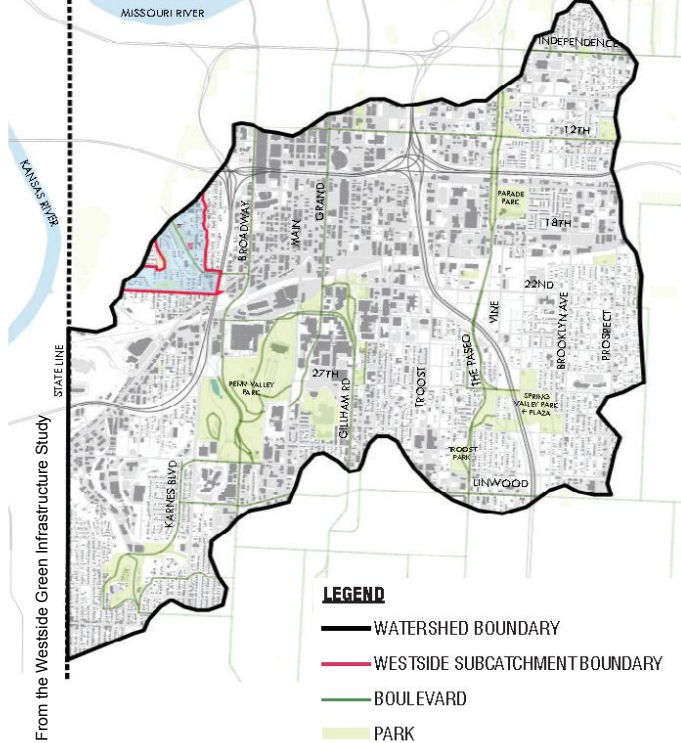


Standard best practice signage with bumpouts that collect stormwater



# Green Infrastructure

# TURKEY CREEK WATERSHED





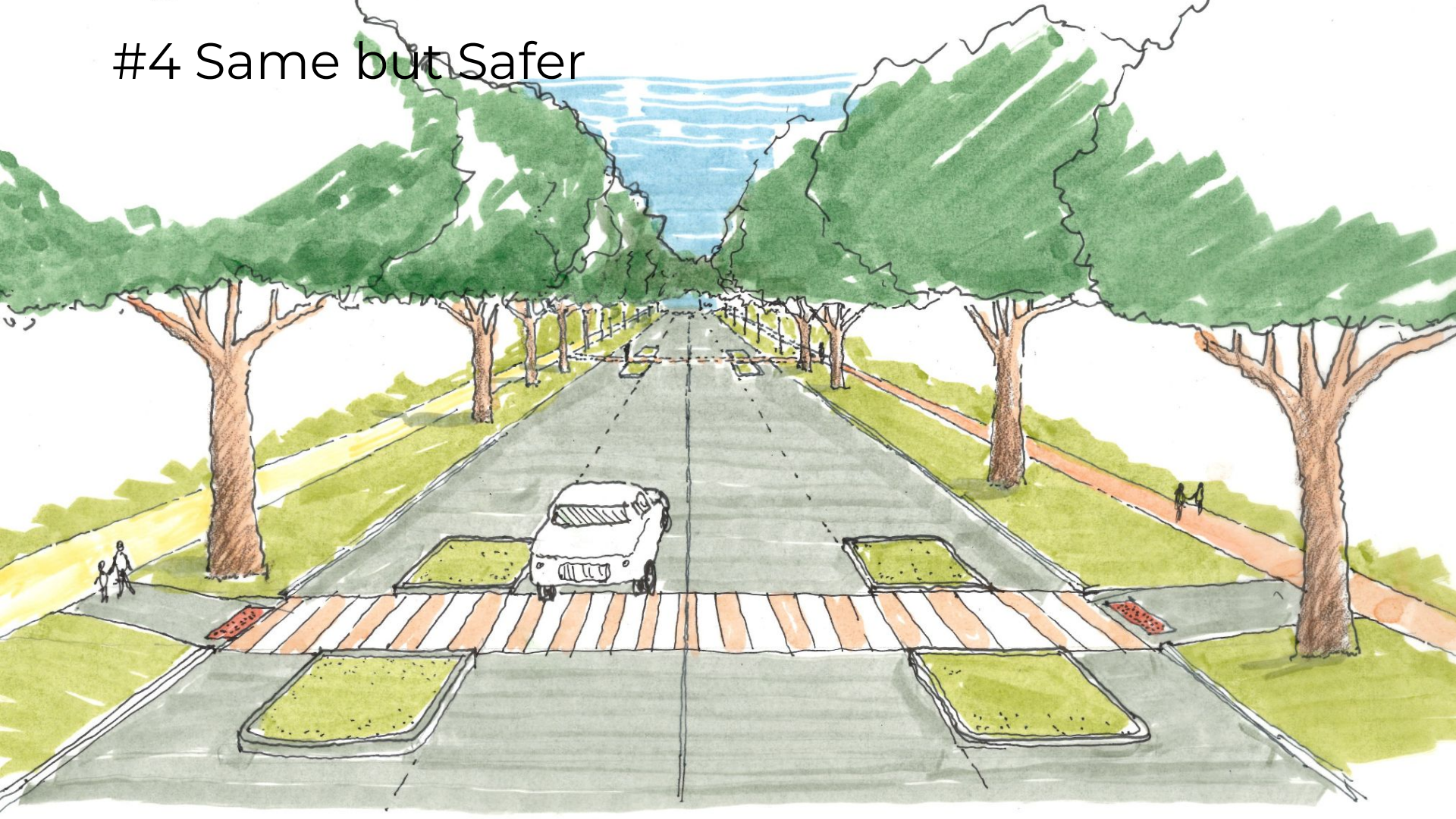
# Green Infrastructure





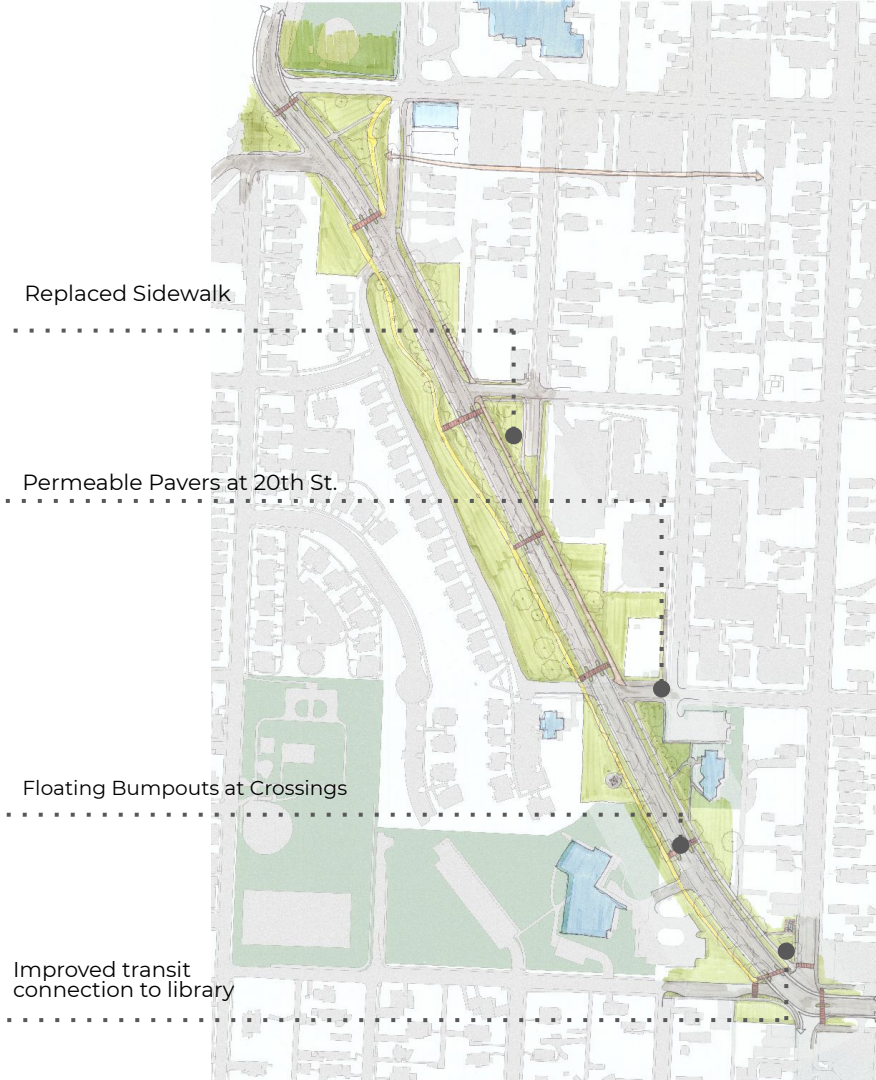
# Design Scenario 4

## #4 Same but Safer



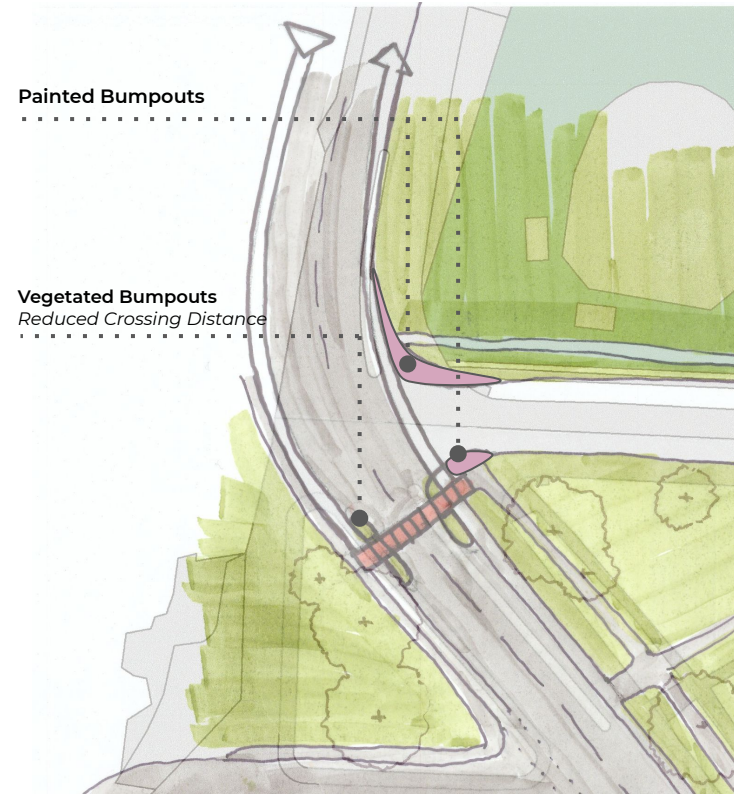
## #4 Same but Safer

- Minimal roadway changes
- General intersection improvements at 17th and 21st

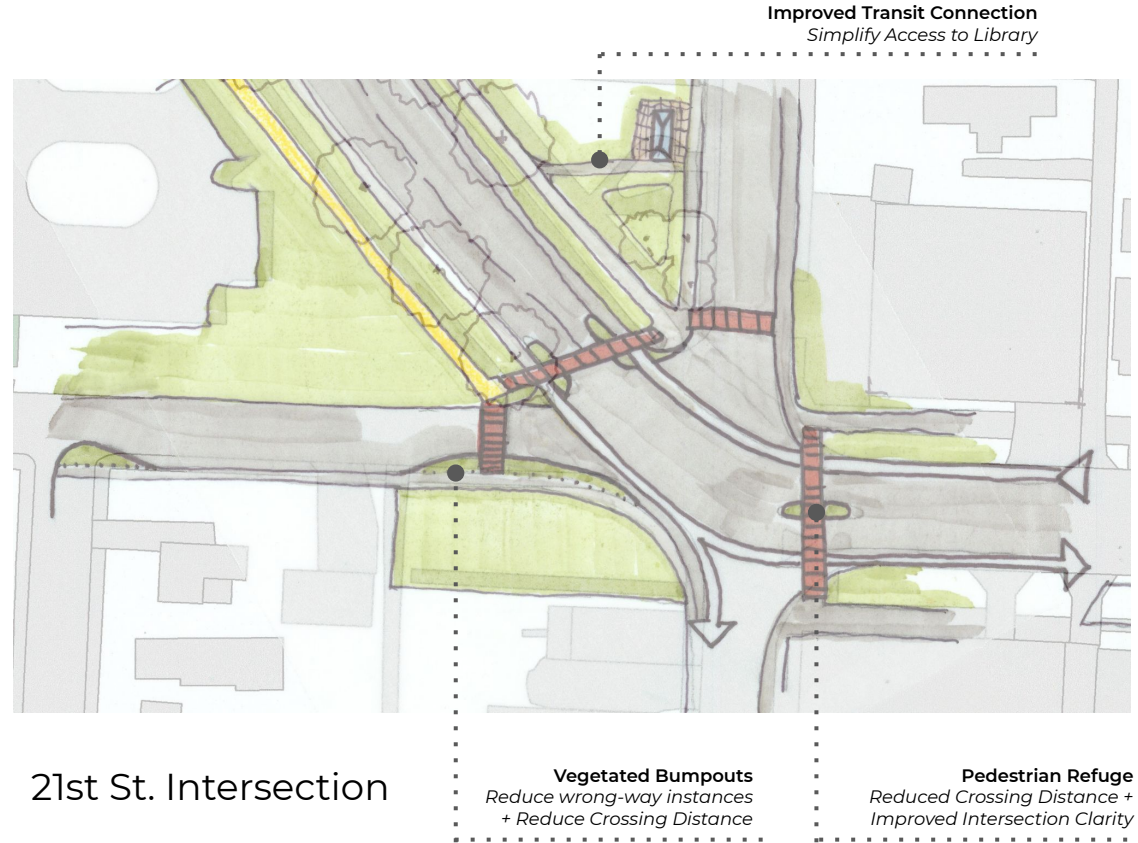




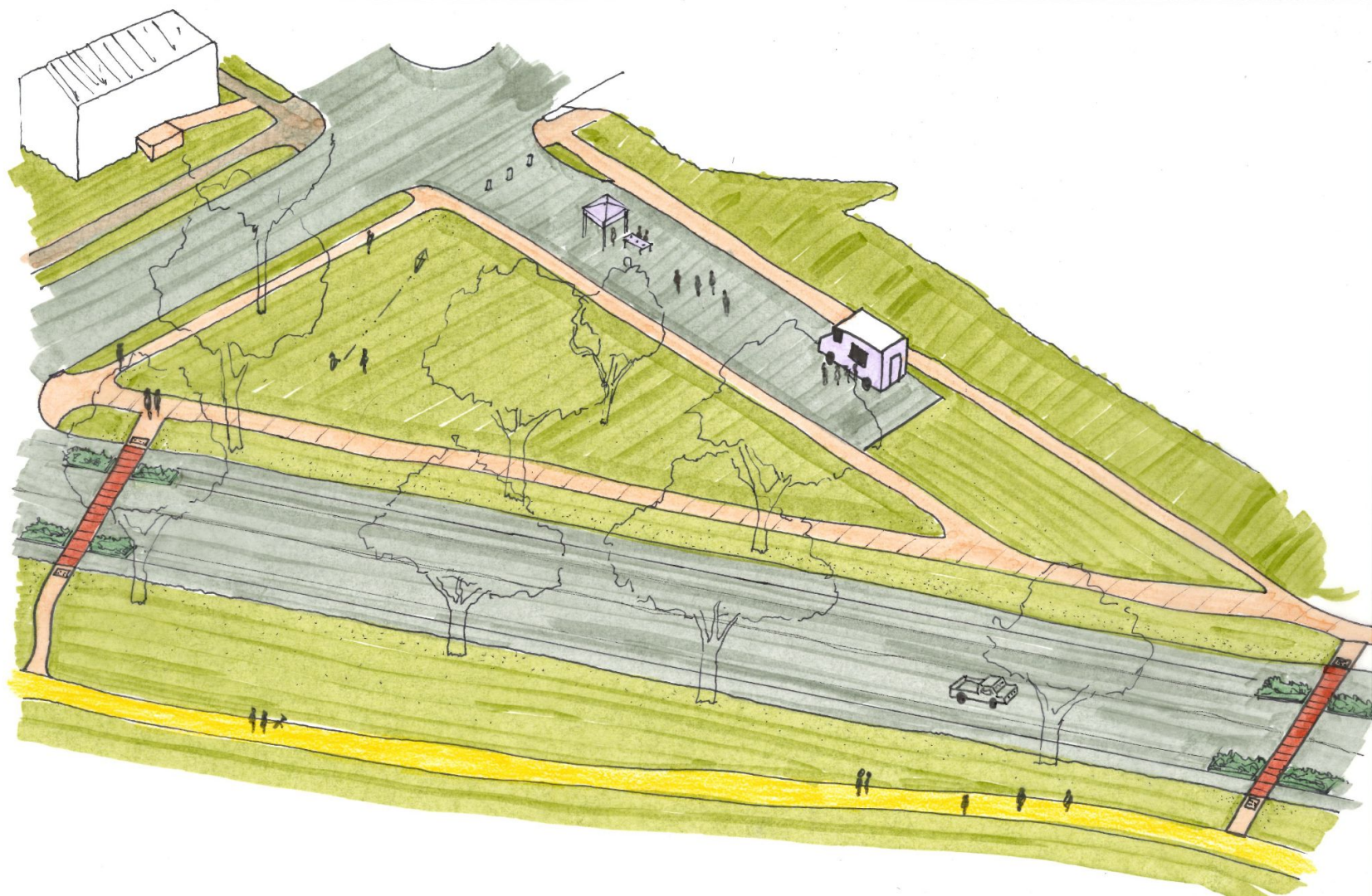
# #4 Same but Safer



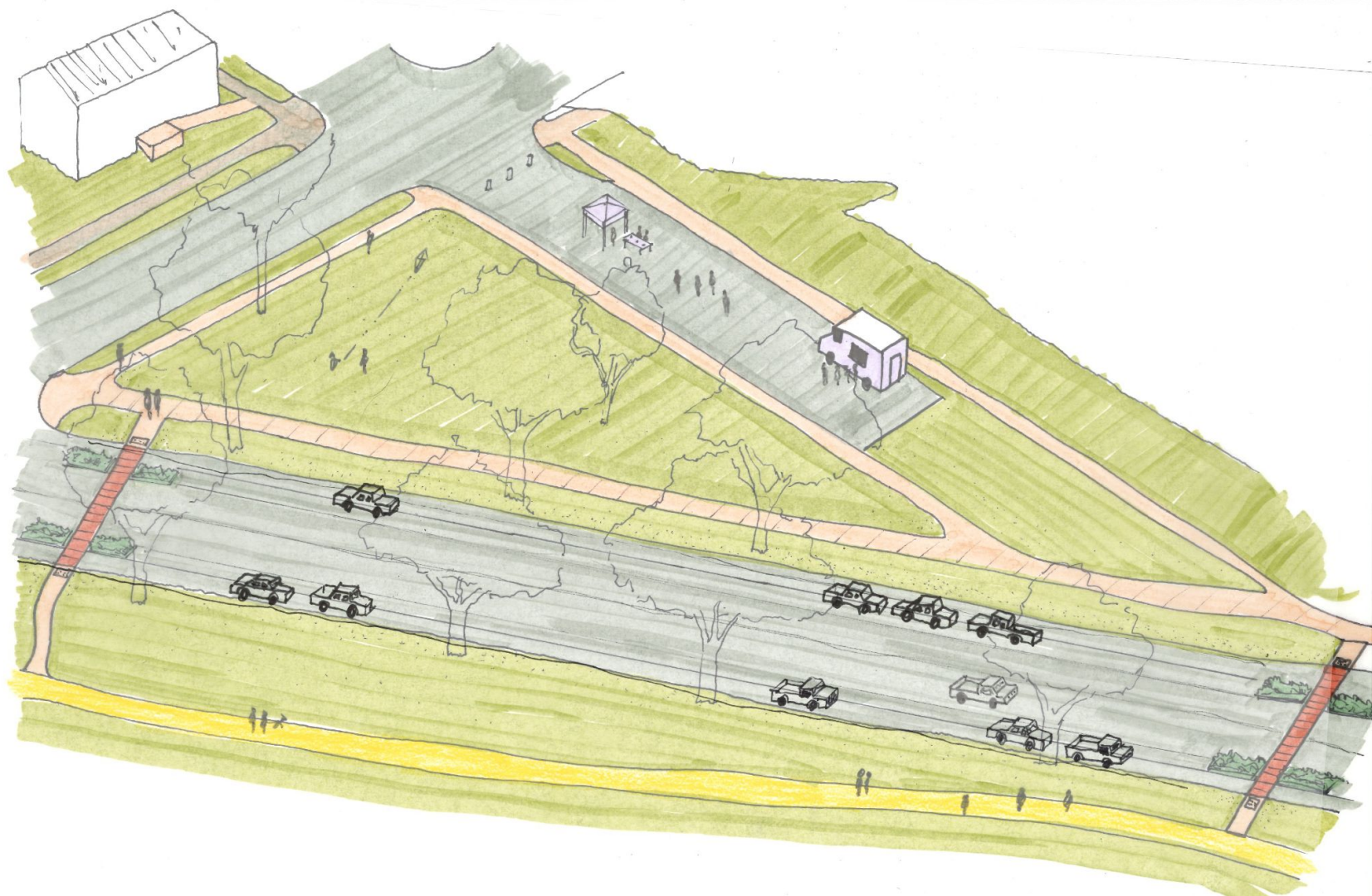
17th St. Intersection



21st St. Intersection









**1. Simple and Symmetrical**



**2. The Promenade**



**3. Meander**



**4. Same but Safer**

Cost:	\$\$	Cost:	\$\$
Parking:	135 parallel for events (60 legal daily)	Parking:	154 angled for events (77 parallel daily)
Safety for all modes:	Affordable best practices suitable to all mode counts	Safety for all modes:	Affordable best practices suitable to all mode counts
Change:	Similar to existing, with lane width reduced to 11'	Change:	Vehicular traffic shifted to east side; refuge islands; lane width reduced to 11'
Daily flexible space:	Minimal	Daily flexible space:	Maximized (1.5 acres in ROW)
<b>1. Simple and Symmetrical</b>		<b>2. The Promenade</b>	
Cost:	\$\$\$\$	Cost:	\$
Parking:	76 angled & parallel (all legal daily)	Parking:	150 parallel for events (60 legal daily)
Safety for all modes:	Affordable best practices suitable to all mode counts	Safety for all modes:	Safer crosswalks than currently but lane dimensions are not changed, so greater than 25' distance
Change:	Biggest change to look and feel of roadway; <u>moves bike path out of ROW</u>	Change:	Most similar to existing
Daily flexible space:	Second to Promenade	Daily flexible space:	None
<b>3. Meander</b>		<b>4. Same but Safer</b>	



# **Poll #1: Priorities**

## Poll #2: Scenario Preference



**1. Simple and Symmetrical**



**2. The Promenade**



**3. Meander**



**4. Same but Safer**

# **Next Steps**

## **Community Meeting 1**

**Steering Committee and Technical Advisory Joint Meeting**  
Preferred Scenario and Implementation

## **Community Meeting 2**

Either early December or early January



## Poll #3: Meeting Dates

Please take the short anonymous survey that will appear when you logout of the meeting.

**Thank you and see you soon!**